

Pewter Live

CONTENTS

Sponsors 2

Introduction 3

The Company 4

Judges 6

Shop and Marquee 9

Colleges and Universities 10

Open Design Competition 11

Student Competition:

Architecture and Furniture 15

Decorative Arts 21

Fashion - Jewellery and Accessories 32

Fashion - Total Look 39

ABPC 42

The Hall 43

Design Rights 44



The Worshipful Company of Pewterers would like to thank

City and Guilds

Conran & Partners

Esmee Fairbairn

Giftware Association

Hopeman Associates

NAG – the National Association of Goldsmiths

Neish Trust

Rathbones

Speechly Bircham

The Worshipful Company of Loriners

Wildshaw Ltd



Passionate about fine wine.



CADMAN
FINE WINES

www.cadmanfinewines.co.uk

To order:

Telephone 0845 121 4011 Fax 0845 121 4014
www.cadmanfinewines.co.uk email: sales@cadmanfinewines.co.uk

Introduction

The Worshipful Company of Pewterers is proud to present **Pewter Live 2008**. The diversity and range displayed in the pewter produced is truly inspiring and we hope that many of these pieces will go forward to be produced commercially. We have had a particularly good response from the Students and we are especially pleased to now have the London Metropolitan University on board. Over 80 students from 12 different colleges and universities are taking part in the Student Design Competition with ten designers competing in the Open Design Competition. The Student Design Competition comprises four categories each with a brief: Architectural Furniture - Fixtures and Fittings; Decorative Arts; Fashion - Jewellery and Accessories, and Fashion - the Total Look. For the Open Design Competition the brief was to design an item in pewter for use outside the home - in the garden, conservatory, patio, window box, or even on a picnic. Pewter weathers beautifully and its patina often benefits from ageing: it is therefore an ideal material for a water feature or garden ornamentation as well as more practical items such as planters, table-tops, sundials, lighting or outdoor eating.

Pewter Live is organised by the Worshipful Company of Pewterers with the support of the Association of British Pewter Craftsmen. New products have reached the market as a direct result of this competition. Pewter is a fine material to work with which is often overlooked as it is perceived as a 'base' metal, however, the softness and sheer versatility of the material lends itself to a multitude of applications. Modern pewter contains no lead; it is an alloy of tin with other metals such as copper and antimony. The beauty of this is that pewter requires very little maintenance, and 'polished' pewter will retain its shine if simply cleaned with a soft cloth.

The Pewterers' Company today is a far cry from the early days when, for example, a supply of armour was kept at Pewterers' Hall and an armourer employed to keep it in top condition. The original role of the livery company was to support the artisan trades and in this respect we are still fulfilling our role. The Pewterers' Company today remains in the forefront of the promotion of pewter and maintains connections with pewter trade associations throughout Europe via the European Pewter Union, of which it was a founder member.

Master and Company



The history of the Company reflects that of the use of pewter. The first reference to 'the makers of vessels of pewter' is dated 1348 when they asked the Mayor and Corporation for approval of articles drawn up for trade governance. It was much later that Edward IV granted the first charter in 1473/4. This gave the Company the right to be self-governing, to hold goods and property in perpetuity and to govern the trade throughout the kingdom. This last is unlike the powers granted to the majority of other companies whose jurisdiction was limited to the City and its environs. Arms were granted to the Company at the same time.



Groups of tradesmen naturally congregate to discuss matters of mutual interest. Since in feudal times any gathering was considered suspect by the authorities, companies usually had a religious affiliation. Ours was to the Virgin Mary, and her symbol, a lily pot, appeared in our original arms. This was changed in 1533, during the Reformation, when the one in present use was granted. The Company was concerned with trade matters, costs, prices, raw materials, quality of pewterware and training of apprentices, as well as relief to the poor within the trade, funeral expenses, general charity and civic duties.



The Company continues to support the trade, charities and the City as well as meeting together in Pewterers' Hall. The first Hall, completed in 1496, was destroyed in the Great Fire. The second Hall, on the same site in Lime Street, was demolished in 1932, although from the mid 19th century the premises were let to a firm of hatters. We do however still own the site. The present Hall was opened, on a new site in 1961.

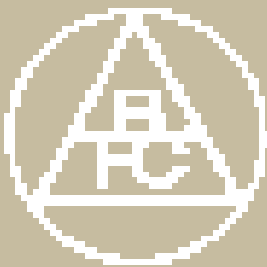
The Worshipful Company of Pewterers is one of the older Livery Companies in the City of London. It is number 16 in the Order of Civic Precedence among over a hundred companies. The earliest documented reference to it is in the records of the Corporation dated 1348 when the 'goodfolk, makers of vessels of pewter' came before the Mayor and Aldermen asking for approval of the Articles which they had drawn up for the regulation of the trade.



The members of the craft had formed together into a guild some while before this for, fundamental to the medieval conception of social organization, was the doctrine of collective rights and responsibilities, and no trade could rise above a rudimentary level without assuming some form of association. It is probable that the Fraternity was originally semi-religious and the connection with pewter was secondary and subsequent to its foundation. The Company's own records are extant from 1451.



Today, the Pewterers' Company is actively involved with the pewter trade through support for the Association of British Pewter Craftsmen (ABPC). The ABPC was formed in 1970 as an initiative of the Pewterers' Company and its members are required to touchmark their finished products, much as Pewterers were obliged to do in centuries past. The seahorse to the left is the modern touchmark signifying high quality, the centre mark is that of the ABPC and the European Pewter Union mark is shown at the bottom.



The Pewterers' Company today remains in the forefront of the promotion of pewter and maintains connections with pewter trade associations throughout Europe via the European Pewter Union, of which it was a founder member.



Judges

The Pewterers' Company is delighted to welcome Deyan Sudjic as the VIP guest and Presenter of Prizes for Pewter Live 2008.



DEYAN SUDJIC, DIRECTOR OF THE DESIGN MUSEUM, LONDON. Founded in 1989, the Design Museum is the UK's cultural champion of design and wins international acclaim for exhibitions of modern design history and contemporary design.

Before joining the Design Museum in August 2006, Deyan was Dean of the Faculty of Art, Architecture and Design at Kingston University, Visiting Professor at the Royal College of Art and the Academy of Applied Art in Vienna, and the Observer newspaper's design and architecture writer. He was Director of Glasgow 1999, UK City of Architecture, and in 2002 was Director of the Venice Architecture Biennale. From 2000 to 2004 he was Editor of Domus, and Founding Editor of Blueprint magazine from 1983 to 1996. Deyan has published many books on design and architecture.

In 2004 Deyan was awarded the Bicentenary Medal of the Royal Society of Arts for the promotion of design, and was made an Honorary Fellow of the Royal Institute of British Architects. He was awarded an OBE in 2000.



SEBASTIAN CONRAN was born in London in 1956. After gaining Maths Physics & Chemistry 'A' levels at school, he studied Industrial Design Engineering at the Central College of Art & Design where he was treasurer of the Student Union and student representative on the Governing Council and gave the Sex Pistols their first-ever booking. Subsequently he worked with the Clash, designing record sleeves, promotional material, posters, T shirts and other clothing. Sebastian started his own design business in 1986, 'Sebastian Conran Associates' (SCA), a product and brand development consultancy that worked with a variety of international businesses to develop healthcare and consumer goods, industrial design, and luxury goods. 1992 Sebastian started a separate partnership with designer Tom Dixon. In 1999 SCA studio merged with the Conran Group to form Conran & Partners. Sebastian has written several books, articles and papers on design; he was a founding contributor to Blueprint magazine; he has taught furniture design at the Royal College of Art and lectures frequently as well as judging (and sponsoring) many international design awards such as D&AD, Design Week, Red Dot, and the RSA. An active member of several bodies, he is, amongst others, an Honorary Fellow of the Royal College of Art and Fellow of Royal Society of Arts.



KERRY NICHOLLS joined John Lewis in 1994. Before moving to the buying office she spent eight years on the selling side and managed departments in various product areas including Silverware. Kerry has been buying silverware, cutlery, frames and clocks for four years, working with a wide supply base using diverse materials across a range of product types. Within the silverware area she finds it exciting working with suppliers to develop traditionally handcrafted products using materials like sterling silver and pewter that reflect current design trends.



STEPHEN WIDDOWS is Managing Director of DJH Engineering Limited a business he co-founded in 1983. Specialising in the centrifugal casting and finishing of pewter DJH has invested heavily in state-of-the-art automated machinery and operates from a modern purpose-built 20,000 square foot factory in the north east of England. DJH processes over 50 tonnes of pewter per year and prides itself on retaining its design, tooling and manufacturing facilities in-house. DJH's main service is that of contract casting of which 60% is exported. Its key markets are domestic hardware (kitchen and bedroom), corporate gifts and quality collectables.



LAUREN SIZELAND is Head of Business Development and Licensing at the Victoria & Albert Museum. Lauren has 15 years experience as a senior brand developer within the established arts and museum sector. In 1988 she was involved in the pioneering development of retailing at the Royal Academy of Arts and was later recruited to develop 'Art Room' – a new concept for retail and mail order. Lauren has also worked as a consultant for the New Millennium Experience Company, BBC Worldwide, British Museum, National Portrait Gallery, RSC and Harrods. She became Head of Retail & Brand Development for NMSI; managing the commercial functions at three UK national museums, achieving marked success with the Science Museum, which now has its brand in more than 300 high street stores. As Head of Business Development & Licensing at the Victoria and Albert Museum since 2005, Lauren is responsible for directing the V&A's international licensing programme. The museum holds an extensive collection of pewter, which is especially rich in European pieces. The licensing programme also has long-term partnerships with pewter manufacturers across the globe.

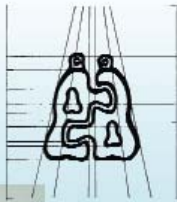


JEAN CARR is the Features Editor of Country Homes & Interiors, an IPC SouthBank monthly publication and the only country decorating magazine in the market. It offers inspirational country homes and gardens, property trends, seasonal decorating and food, leisure and travel ideas, and real lifestyle stories. It frequently showcases new and established British designers, craftspeople and their work. Jean has always been a passionate champion of crafts, particularly artist designers from her native Cornwall, including silversmith Charles Hall. She advises on promotion and publicity at workshops for Cornish based designers held by Creative Kernow and the Cornwall Crafts Association. Her interest in pewter began while researching a feature on antique pewter tableware and she discovered Pewter Live and the stunning range of contemporary items by established and student designers. The magazine has since featured pewter work by master craftsman Keith Tyssen and Pewter Live winners Loretta Harmer and Tim Parsons.



GEORGINA GODLEY began her career as a designer and developed into becoming a creative director for international fashion and life-style brands. Having trained as a fine artist at Chelsea School of Art, she was recruited into fashion, and launched two successful labels, CROLLA 1981, and GEORGINA GODLEY 1986. In 1999 she focused on homewares, when she was appointed Style Director and Head of Home Accessories with Tom Dixon at Habitat. In 2004 she was appointed Creative Director at Wedgwood, where she developed their product ranges of ceramics, glass, crystal, metal-ware, jewellery and textiles. She opened new stores and re-positioned the perspective of the brand. Georgina's reputation rests on her innovative use of materials and unerring forecasting of trends in all areas of fashion, dress, product-design, and interiors. She now works in a recently established Creative Consultancy of unique power in the world of international fashion and life-style.

Partners in Pewter



"When only the best will do, choose a unique solution from Partners in Pewter."

www.partnersinpewter.co.uk
tel: 01628 485 764

DAVID MOULSON Antique Pewter Specialist

Dealer in fine British Pewter since 1987 Please call or email for details of current stock

01789 764092 or dmoulson@hotmail.com



*Shown above from left to right
Pint baluster measure by William Waters c1700 Broad-rimmed plate by George Lester c1680 Late 17th century Spice Pot Very rare English Pear-shaped flagon c1600.*



We understand how important your event is

We welcome you into new exciting venues

We create food you can almost taste as you read the menu

We have 1 aim to provide excellent food and service for you, our most important asset

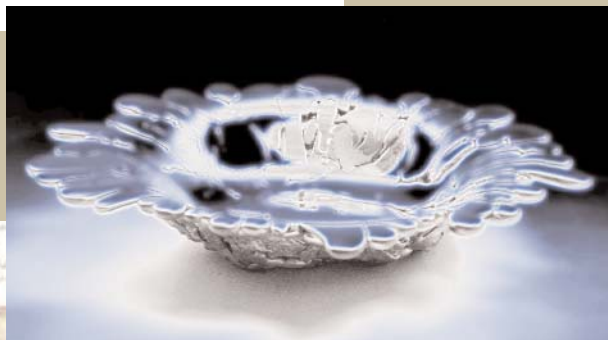


020 8567 9090
www.richmondcaterers.com
info@richmondcaterers.com

Shop and Marquee

shop@pewterlive

Pewter Live 2008 will once again host shop@pewterlive where visitors can purchase contemporary and traditional pewter from members of the Association of British Pewter Craftsmen.



marquee



The Pewtersmithing Marquee, on the grass outside Pewterers' Hall, offers visitors the opportunity to see skilled craftsmen spinning, turning and casting pewter with some of the items on sale - hot from the press!

We will be selling items from:

A. R. Wentworth (Sheffield) Ltd
Sheffield
Tel: 0114 244 7693
Fax: 0114 242 3159
sales@wentworth-pewter.com
www.wentworth-pewter.com

A. E. Williams Ltd
Birmingham
Tel: 0121 643 4756 B5 5DE
Fax: 0121 643 2977
sales@pewtergiftware.com
www.pewtergiftware.com

Edwin Blyde & Co. Ltd.
Sheffield
Tel: 0114 249 1930
Fax: 0114 249 1950
pewter@edwinblyde.co.uk

Glover & Smith
Salisbury
Tel: 01722 741 096
Fax: 01722 741 096
office@gloverandsmith.com
www.gloverandsmith.com

Keith Tyssen DesRCA
Sheffield
Tel: 0114 273 0639
Fax: 0114 273 0639
keithtyssen@blueyonder.co.uk
www.keithtyssen.co.uk

St Justin Cornwall Ltd
Penzance
Tel: 01736 369 600
Fax: 01736 341 622
sales07@st.justin.co.uk
www.stjustin.co.uk

Partners in Pewter
Tel: 01628 485 764
www.partnersinpewter.co.uk
info@partnersinpewter.co.uk
www.partnersinpewter.co.uk

Fleur Grenier
design@fleurgrenier.co.uk
Tel: 07761 385 267

Public opening times
11.00 - 17.30
www.fleurgrenier.co.uk
Wednesday 11 June
www.pewterers.org.uk
pewterlive@pewterers.org.uk

Colleges and Universities

Pewter Live could not be run without the colleges and universities which take part. Once again, our thanks to go the tutors and students for their support and the tremendous effort and enthusiasm which goes into the competition.

Birmingham City University

www.bcu.ac.uk

Tutor: Terry Hunt

Buckinghamshire Chilterns University College

www.bccuc.ac.uk

Tutor: Andreas Fabian

Hastings College of Arts & Technology

www.hastings.ac.uk

Tutor: Ashley Heminway

Hereford College of Art & Design

www.hereford-art-col.ac.uk

Tutor: Clive Hickinbottom

Manchester School of Art Manchester Metropolitan University

www.mmu.ac.uk

Tutor: David Grimshaw

South Devon College

www.southdevon.ac.uk

Tutor: Trish Woods

Staffordshire University

www.staffs.ac.uk

Tutor: John Grayson

Truro College

www.trurocollege.ac.uk

Tutor: Martin Page

University College for the Creative Arts at Farnham

www.ucreative.ac.uk

Tutor: Susie Fortune

University College for the Creative Arts at Rochester

www.ucreative.ac.uk

Tutor: Brian Hill

University College Falmouth

www.falmouth.ac.uk

Tutor: Jason Cleverly

London Metropolitan University

www.londonmet.ac.uk

Tutor: Beaulagh Brooks

Open Design Competition

Prizes

First £3,000 Second £1,000 Third £500



Sculptural Timepiece - solid yew stake with intricate pewter inlay

Laura Carnell and Grant Jones

Ra Ra Design

The age of the wood and the tradition which pewter brings to this sculptural timepiece allude to past histories, while Ra Ra's use of digital technologies engages with a possible future. Its form echoes strength and endurance and as the pewter weathers it will develop a patina that reflects the passage of the time it is built to measure.

laura@rara-design.co.uk

This year the judges are seeking a design in pewter for use outside the home - in the garden, conservatory, patio, window box, or even on a picnic. The judges will be looking for originality in both the visual design and the use of pewter as well as appeal for the contemporary 'leisure/outdoor' retail market. The fact that pewter weathers well makes it an ideal material for outdoor use.



Garden Jewellery

Susan Bradley

This pewter wall design adds a sculptural decorative feature to any outdoor vertical surface and can be used alone or combined with plants to act as a trellis. The design is like a piece of oversized jewellery which will weather and age over time and was inspired by sketches of plants made at the Oxford Botanical Gardens, which have then been manipulated and abstracted.

susan@susanbradley.co.uk

www.susanbradley.co.uk

Open Design Competition



Roman Lamp

Martin Page

Inspired by the combination of Roman oil lamp and new technology, this whimsical design using the malleability of pewter to create the form with LED lit acrylic flames will add interest and visual fun to any outdoor eating event.

martinp@trurocollege.ac.uk



Picnic set

Tim Parsons

This picnic set comprises four cups and plates that borrow their form from the archetypal paper versions. The directness and simplicity of the forms make them ideal for showing off the properties of pewter, turning the throwaway into the durable and desirable. Aimed at department stores, the pieces are easy to produce using pressing (plates) and spinning (cups).

t.parsons@camberwell.arts.ac.uk
www.timparsons.info



'Hooky'

Jon Martin

'Hooky' is a new look multi-hook that brings a helping hand, leg, or tail to hanging things in the garden or home. Easily made by laser cutting, or moulded for larger runs, 'hooky' came from my desire to bring fresh life to mundane objects and playfulness to pewter.

yoyoboom@yahoo.com

Open Design Competition

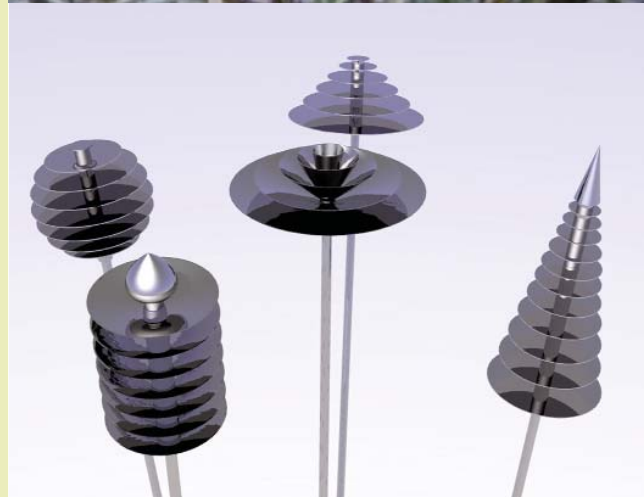


'Away with the Wind'

Sian Jones

'Away with the Wind' is an outdoor pewter urn for storing someone's ashes. Inspiration came from losing someone I was extremely close to. After the funeral, I could not find an attractive urn to store her ashes in. 'Away with the Wind' can be pushed onto the branch of a newly planted tree. As it grows bigger, the urn will be surrounded by bigger branches and will become part of the tree.

siane-j@hotmail.com



Winter Flowers

Katy Holford

The stylized pewter flowerheads top aluminium/stainless steel stakes for use in the summer to stake tall flowers or support climbing plants. The Winter Flowers come into their own in the winter when the plants die down, catching the low winter sunlight creating a striking feature. They can also be used as adornment on patios or driven into gravel in Mediterranean-style gardens, adding a beautiful sculptural element.

katy@kathyholford.co.uk

www.kathyholford.co.uk

Open Design Competition



'Te-Lys' - a leaf shaped tea light holder, with leaf/floral cut-out patterns

Polly Glass

'Te-Lys' is the Norwegian name for a tealight and I began this project whilst studying in Oslo. My aim is to develop the design so that it can be made from pewter and be suitable for outdoor dining. The design offers the user a chance to explore pattern-making by arranging the tealight holders in different ways.

polly@pollyglass.com
www.pollyglass.com



Integrated Dish

Denise Thompson

Strawberries and cream at Wimbledon? A summer garden party? With a quirky nod to disposable picnicware, this elegant piece is perfect for alfresco dining, combining practicality with sophistication. Interchangeable mould-formed glass, slipcast ceramic or spun pewter bowls sit stably within the stamped pewter plate, allowing easy holding and stacking.

denise.thompson@virgin.net



Planter and Hanging basket

Stephen Corless

This planter will display decoratively one or more alpine plants in the garden, as a table centrepiece or integrated into the landscape. Each one is hand made and can be altered to suit individual customer requirements. The pewter is cast and then blocked into shape and can be turned over and utilised as a hanging basket.

Telephone 0161 431 5846

Architecture and Furniture

Student Competition

Prizes

First £500 Second £350 Third £150

Pewter offers students tremendous potential to design contemporary interior fixtures and fittings - from handles and hooks, shelves and brackets to light fittings, lamp bases and bathroom accessories. Students are asked to design a one-off item or a range of pieces which show originality. Today's homes adopt a variety of 'looks' - minimalist urban-loft living, country-style cosiness, revivalist or traditional - and most successful businesses have a corporate 'look' which inspires confidence through its professionalism. Pewter fixtures and fittings can enhance them all.



6 Pewter Hooks

Benjamin Ryan

Buckingham Chilterns University College

These Pewter Hooks are designed as an attempt to bring pewter as a material into the 21st Century. The Pewter Hooks differ from the majority of fixtures/fittings in the market by using the technology of magnets. They therefore have no need for screws, nails or adhesives. The beauty of the Hooks is they can be attached to anything magnetic. Pewter is the perfect material for the hooks due to its durability, casting capabilities, and light weight properties.

bjryan@hotmail.co.uk



Ghost Table Lamp

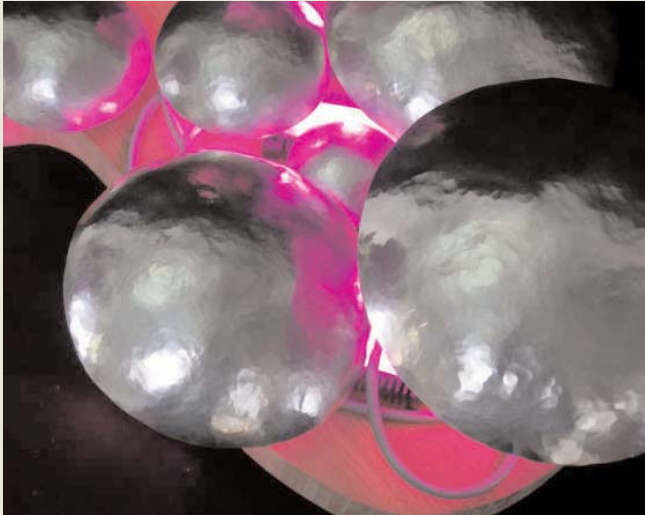
James Dougall

Buckingham Chilterns University College

The ghost table lamp delivers an exciting and luxurious new concept in the use of pewter as an ambient lighting solution for modern living. Inspired by the beauty of pewter and with the opulence of fine gold the sleek simplicity of its shape perfectly complements the design orientated interiors associated with contemporary style.

jdke@onetel.com

Architecture



Decorative, Lit Table Centre Piece

Kirsty Lynn

Birmingham City University

A decorative, illuminated table centre piece which dramatically changes a space and continuously changes any atmosphere. This fresh and abstract piece constantly changes colour; adding interest to any room or occasion; the simple, yet dramatic textured pewter discs, combined with funky and sophisticated lighting technology, scream 'contemporary'!

golden_goose_666@hotmail.com



Contemporary Door Handle

Hannah Chantelle Fewtrell-Bolton

Birmingham City University

Door handle in striking contemporary design ideal for stylish architectural spaces. Exploiting the soft warm feel of pewter with the hardness and colour of resin. Pierced using laser technology. Designed to be part of a range; colour way/pattern can be changed seasonally, without the cost of changing presses and moulds.

anastasia lovesbam@hotmail.co.uk



Decorative Cast Pewter Wall Panels

Alison Kelly

South Devon College

Using Pewter in an architectural application, the slightly rough casting of these panels gives a dull reflective surface and adds an unusual and interesting focal point when used over a large area. A whole wall of panels of a horizontal or vertical arrangement would transform and enliven an interior, especially when used within a commercial setting.

alison.kelly@bluyonder.co.uk

Architecture



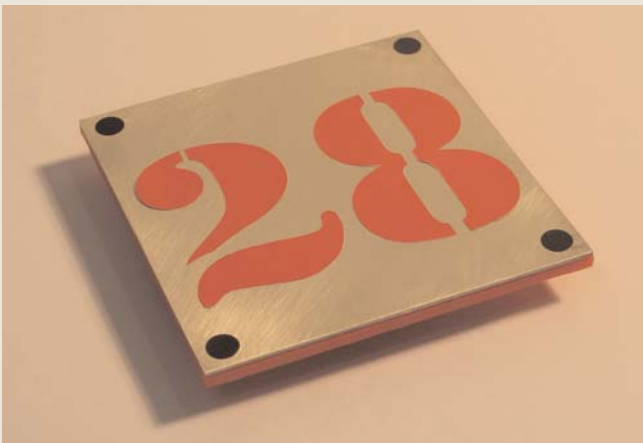
Decorative Drain Hole

Zoë-Elissa George

Truro College

Every day we gaze down into our sink or shower not taking any notice of the drain hole. I have injected style and beauty into what we usually take for granted as an everyday object. Inspiration has come from the elaborately decorated remnants of ship interiors found inside my local pub.

z-e-g@hotmail.com



Wall Plaques/tiles

Laura Jayne Brannon

Birmingham City University

Contemporary and sophisticated wall plaques to be used in various architectural spaces; laser cut pewter utilises new technology and allows the positive and negative elements in the design to be produced without any wasted material. They can be made in a range of colours using letters, numbers or symbols.

laura_b31@hotmail.com



Remote Control Holder

Amanda Wheaton

Buckingham Chilterns University College

Traditional material with a contemporary design – bringing pewter into the twenty first century. A wall-mounted remote control holder with a beautiful deep embossed pattern showing just how versatile the material is. A simple rolled bottom with pierced shapes and a leather lining provides a place to keep that ever elusive controller!

a.j.wheaton@ntlworld.com

Architecture



Squashy Ball Door Handle

Christopher Strange

UCCA, Rochester

This is a fun but functional door handle, using unusual squeeze balls and a contemporary eye-catching design. The foam balls are interchangeable to match a variety of interior designs and situations. This proposal makes a dramatic and distinctive impact to any hotel entrance, boardroom or corporate building.

strange12772@fsmail.net



Wall Hung Water Feature

Sandy Ashton

London Metropolitan University

A vertical, wall-hung panel of polished pewter; projecting centrally is a long slim stalactite sculpture, deeply fissured and tapering to the base. Water seeps through a hole at the top of the panel, over the stalagmite and down the surface, collected in a basin then returned to the top.

sandrekay@btinternet.com

Architecture



Amour Lightshade

Amieé Craddock

Truro College

The lightshade was inspired by Paco Rabanne's collection of metal plate dresses from the 60's. Press forming was used to create the repeated panels, giving it an 'armoured' effect.

haddock-100@hotmail.com



Organic Garden Ornaments

Heather Rimmer

Birmingham City University

Two original one-off garden ornaments to reflect the beauty in your garden. Based on the organic shapes of a bird's nest, the forms are meant to enhance the natural beauty of your outdoor space. These ornaments will fit into any garden, contemporary or traditional.

smokeyjoe120@hotmail.com



Pewter Poste

Conleth Moran

London Metropolitan University

The 'Pewter Poste' is an accessory that disguises ugly letterboxes inside the front door, without affecting the function of the aperture or hindering the retrieval of mail. Due to its simplistic modernist design it can be mass produced at minimal cost, thus fitting in both the gallery and the home.

conlethmoran@hotmail.com

Architecture



Lever Action Pillar Tap

Rachel Newham

University College Falmouth

A bathroom fitting influenced by the Arts and Crafts movement, incorporating a hand made aesthetic. The soft, fluid lines and the figure, imbued with vitality and optimism, adds an unusual twist to the contemporary bathroom.

r.newham@mac.com

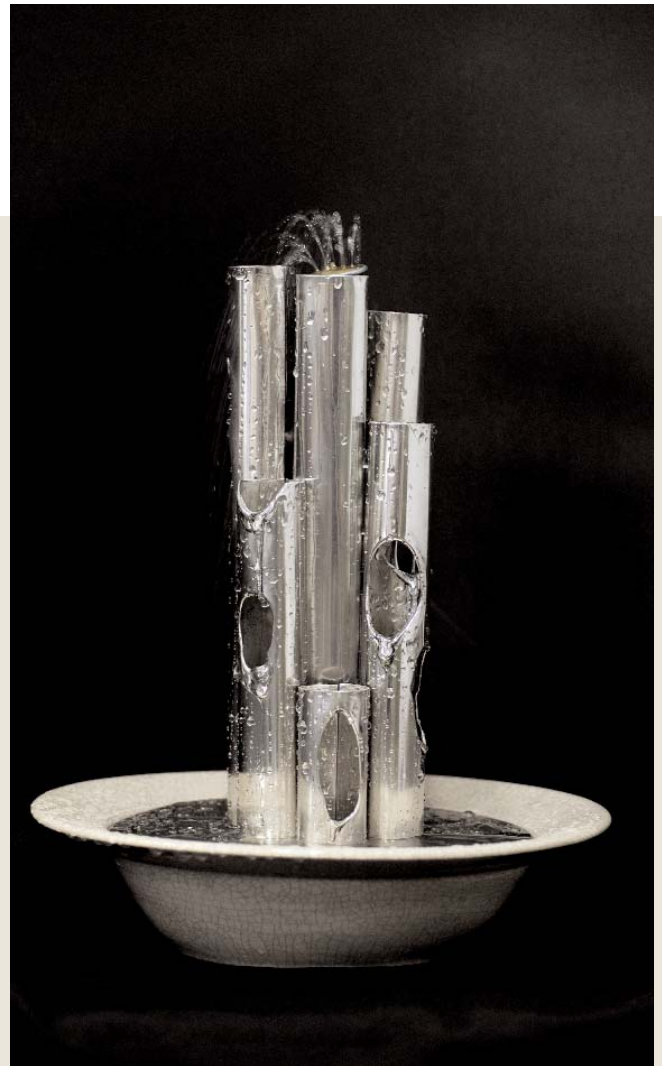


Table-top Fountain

Sarah John

South Devon College

Bring the outside, inside! Made from pewter sheet formed into tubes and then melted to emulate the erosive nature of water which inspired it. Mounted on a thrown ceramic base beneath which a pump is submerged. Pewter is inert, versatile and combines well with other materials.

noble.john@hotmail.co.uk

Decorative Arts

Prizes

First £500 Second £350 Third £150

Student Competition



Balloon Centre Piece

Emma Mogridge

Birmingham City University

Balloon Centre Piece is a bespoke product designed to bring elegance and sophistication to special occasions, including wedding, golden anniversary, and birthday celebrations. The centre piece can be arranged as desired. When assembled it forms a dynamic balloon display, and when placed apart it accentuates individual balloons around the party venue.

e.mogridge15@hotmail.com

The brief for the category of Decorative Arts is to design a pewter item that could be used to 'celebrate' an event. The design can be for a functional, fun or merely decorative item and might celebrate an anniversary, birth, exam or sporting success, or something less obvious such as moving house, passing a driving test, or completing the marathon. The judges want the students to move away from traditional uses for pewter and typical celebratory designs by innovating on gender and age definitions.



'Nibbles Bowl'

Sarah Housley

Manchester Metropolitan University

'Nibbles bowl' is a fresh interpretation of pewter. Birds perch on the edge of the bowl, leaning in to reach the contents. This visual gives a sense of humour to the piece and makes it a charming, unique gift for social gatherings and lazy afternoons in the garden alike.

shousley@hotmail.com

Decorative Arts



Birthday Wishes

Danielle Alder

Buckingham Chilterns University College

This is a beautiful, contemporary piece which is both functional and decorative. The clean lines and highly polished pewter will reflect the light from the lit candle. This unique cake decoration will make a statement on top of a cake and can be kept as a memento of your special day.

lil_miss_danni@hotmail.com



"Corporate Gift Pack for Sporting Events. Brooch Pin and bottle stopper."

Yvonne Lynn

UCCA, Rochester

This brooch pin and wine stopper form part of a corporate gift pack produced for entertainment and marketing at formal dinners and special occasions. The contents offer commemorative and promotional opportunities using thematic keepsakes based on the Olympics and sporting endeavour. Athletic figures in motion are pre-selected from a disc range of sports and are featured on brooch pins, place settings and menu holders. Being detachable, my design is interactive and can be worn immediately providing conversation and reinforcing both brand and activity.

ylynn@students.ucreative.ac.uk



Sealed with a Loving Kiss

Louise Walker

Buckingham Chilterns University College

The red kissing lips of love inspired this contemporary design. This intimate piece is intended for the wedding couple, to hold their chosen favours. The kissing favour is also suitable for holding condiments or for table centrepieces. The piece could also be flexible for any special occasion.

design.lulu@hotmail.com

Decorative Arts



Decorative Objects

YunHee Kim

UCCA, Rochester

My inspiration is taken from the highly effective and visually appealing areas of gift wrapping. They require decorative presentation and special effects for unique occasions. My design reflects visual temptation that ribbons, papers, thread etc. offer through powerful impact from presentation. My versatile idea allows the design to be used as napkin rings, certificate holders and bracelets.

ykim3@students.ucreative.ac.uk



Drip Candlestick

Clare Knox-Bentham

Manchester Metropolitan University

The 'Drip' candlestick uses the inimitable nature of molten pewter to allude to the melting wax of the candle, and the distinctive design gives the illusion that the candle is floating. The manufacturing process ensures each piece is unique, yet ultimately repeatable, providing an individual centre piece for the table.

c-knox@earthling.net



Champagne Flute

Luisella Contu

Manchester Metropolitan University

A champagne flute made for the celebration of the best things in life. Each one is as unique as the person who holds it. Its production unifies casting and dipping techniques that are complemented by a subtle hand finishing creating a visual and tactile contrast that blends the rough with the smooth.

luisellacontu@hotmail.co.uk

Decorative Arts



Festival of Spring

Rosalyn Katz

Hastings College of Arts and Technology

This glass and pewter festival bunting is a celebration of the season of spring. The pewter captures the rhythm of a tree's life cycle and the different shades of green glass symbolize growth and rebirth at this time of year.

rosalyn.katz@btinternet.com



Table-Top Sheet Music and Book Stand

Emmeline Hastings

UCCA, Farnham

Inspired by the lines and material of acoustic guitars this individual one-off table-top music stand could be a celebration of a special performance or graduation. The wood grain and repetition is representational of rhythm and sound waves of music and the natural quality of making or appreciating music. Constructed from reclaimed pine, rolled sheet pewter and clear acrylic.

emmeline.hastings@yahoo.co.uk



Set of Decorative Nesting Bowls

Ruby Mogford

Manchester Metropolitan University

Based upon mathematical geometry and the natural qualities of pewter, the form of these nesting bowls describes a smooth transition from square base to circular rim. The bringing together of two forms and the symbol of changing from one state to another makes these a perfect gift to celebrate a wedding or birthday.

rbylou87@hotmail.com

Decorative Arts



Pewter and Walnut Fruit Dish
Jenny Bland

Manchester Metropolitan University

The complementary material qualities of metal and wood are combined in this reversible pewter and walnut fruit dish. Either used as a large dish or upturned to display smaller fruit, the clean lines and mirror like pewter surfaces provide a platform for the natural beauty and colours of the fruit.

jennyblanders@yahoo.co.uk



An Appealing Memento Tree
Diana Symonds

London Metropolitan University

This expandable tree is designed to hold a myriad of different mementos to celebrate any special occasion such as a wedding, birthday or anniversary. Once full, extra sections can be added so that it continues to be the focus and centrepiece of any celebration and is a lifelong treasure.

dyanasymonds@yahoo.co.uk

Decorative Arts



Water Lily Lantern

Alison Hanlon

Truro College

A lantern inspired by the way a Water Lily flower opens out. The simple spiral mechanism enables the petals to open and close according to how much light you require.

alisonhanlon@yahoo.co.uk



Two Pewter Platters

Jade Alicia Graham

Hastings College of Art and Technology

I have created the use of natural light in a rhythmic way against the pattern of the non-organic pewter. The pewter is used as a canvas for my patterns. The shape and style of my pewter platters is derived from observing landscapes and patterns which occur naturally.

jade_graham@hotmail.com



Women's Rights?

Julie Linn

Staffordshire University

This work 'celebrates' women's rights and freedom. It reflects my personal observations about female roles. It's weight is synonymous with the meaning it aims to portray. The historical context begins with medieval persecution of women. The work references Cinderella, restraint and breakthrough. Its aims are to encourage questioning and reflection.

j.linn@staffs.ac.uk

Decorative Arts



Presentation Plaque

Mary Micklewright

South Devon College

The certificate holder is inspired by the clean lines and forms seen in Japanese textile art and in tensile structures. Sheet pewter is gently shaped to form a stand, based on a mortar-board. A slot and tassel secure the certificate. University logos, name and date of achievement personalise the piece.

mmmarymick@aol.com



'A Tale of Two Lovers'

Emily Winning

University College Falmouth

With this piece I have endeavoured to identify the story behind the 'Willow pattern'. I have worked with the two main characters of the story, the two doves. By removing them, the two birds are set free, celebrating a lovers search for eternal happiness. The space where the doves were has been filled in with layered sheet pewter.

emily_winning@hotmail.com



Spoon Sculpture

Inga Winson

Hereford College of Art and Design

My work is inspired by spoons. I love the comforting, secure feeling of the smooth indent and the elegance of a long handle. Explosions of yarns, metal spines and deteriorating surfaces really inspire me. The fibrous energy within my drawings is transferred to my sculptures. For this piece I have incorporated pewter solder wire into the making, with small additions of nickel and steel.

inga_crazy@hotmail.com

Decorative Arts



Decorative Fruit Bowl

John Lillyman

Hereford College of Art and Design

My design has been inspired by the forms of sails and the tension and line contained within. A combination of forged steel and pewter has been used to capture the flow of the sails, creating an object which is both functional and aesthetically pleasing.

lillyforge@yahoo.co.uk



Decorative Vessel

Sarah Schramm

Hereford College of Art and Design

Inspiration for my work comes from my love and fascination with the sea. The form of my vessel developed from watching the beautiful movement of waves building and breaking. The main form is pewter and the inner weaving is a mixture of silver and silver plated wire and textiles.



Decorative Bowl

Jane Drummond

Truro College

The design for this piece has developed through a process of studies directly taken from a selection of dried wild mushrooms. The technique used in making is known as 'raising' which is the process using hammers and stakes. It is a decorative piece as well as being suitable for serving or display.

janedrummond@googlemail.com

Decorative Arts



Nest Pods in Three Parts

Maria Udvar

Hereford College of Art and Design

My experimental work aims to create a dialogue between contrasting elements. The three pewter vessels rest within soft felted nests, these create a protective impression. The collection celebrates diversity and unity through juxtaposing materials, textures and form.

mariaudvar@live.co.uk

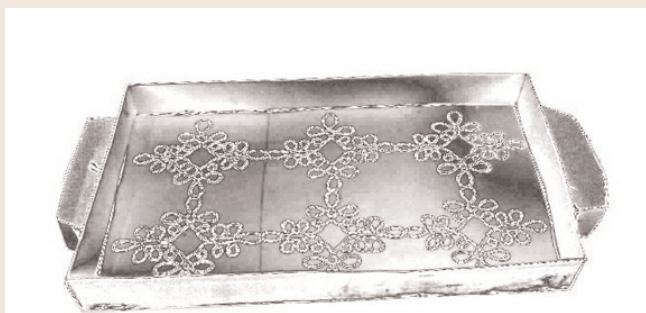


Decorative Vessel

Harmony Jutle

Hereford College of Art and Design

My love of period costume has been the inspiration for this vessel. Linear qualities from skirts and dresses are reflected in the construction of the form. I have used a mixture of pewter and fabric panelling, connecting them with intricate stitching. The pewter has a fabric appearance and the metallic embroidery enhances surface qualities.



Tray

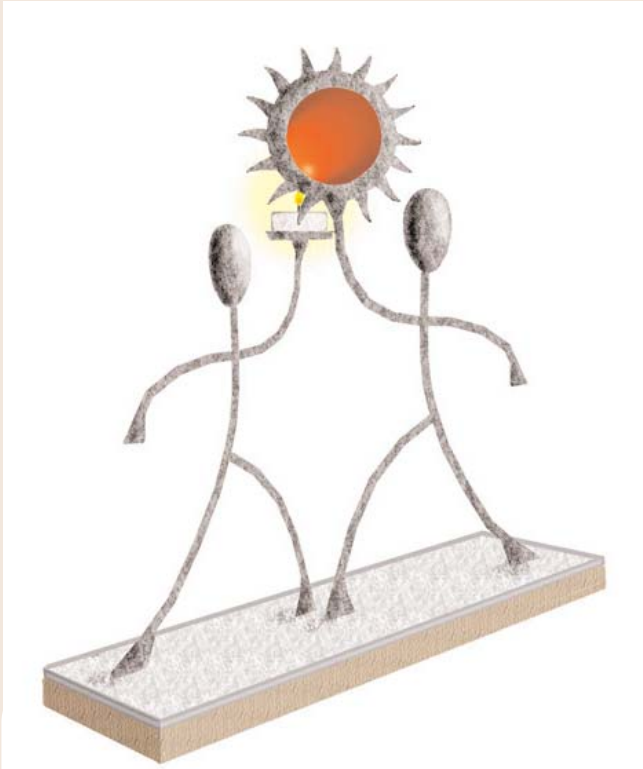
Meral Sanli

Hastings College of Arts and Technology

I have used a lace pattern in my work as a motif for my tray. This motif would usually be used as a tablecloth, but I would like it to become part of the tray. The motifs are interlinked and become a pattern. I have used block and sheet pewter, applying the technique of casting and then fixing it onto the pewter sheet. The handles and edges are in the form of a band.

meral.sanli@btinternet.com

Decorative Arts



Spring

Steve Rutter

Hastings College of Arts and Technology

Pewter is a new material for me and this piece has allowed me to explore some of its potential through casting, pressing, soldering and selective polishing. The work represents two figures in celebration of the coming of spring.

steverutter@f2s.com



MP3 case

Laura Iwanyckyj

Manchester Metropolitan University

One of a proposed range of MP3 cases that combine traditional pewter ware with the digital technology of the 21st Century. The design allows for individualism through a choice of pressed or etched surface decoration, and the option to engrave a personal message thereby making it a truly unique gift.

Laura1wan@yahoo.co.uk



Fish knife and fork

Rose Howes

South Devon College

Chinese New Year knife and fork; fish is a traditional dish on Chinese New Year. I wanted the cutlery to emulate the motion of a fish swimming. The sinuous flexibility and gentle sweeping curve of its body as it weaves through the water. I wanted the pewter to reflect this gracefulness.

meganrose78@googlemail.com

Decorative Arts



Pewter Plants

Lindore McClarty

London Metropolitan University

A series of multi-functional objects which look equally fabulous as decorative curtain jewellery, functional curtain tie-backs or shallow dishes for the table. Inspired by underwater plant-life, they are part spun, hand raised and partially pleated with a satin finish. Easily secured vertically to the fabric where they seem to float.

linniemclarty@yahoo.com



Let It Snow, Snowflake Christmas tree decoration

Bianca Wooler

Buckinghamshire Chilterns University

A simple Christmas tree decoration inspired by a wintery storm and the way in which a snowflake rests where it falls. Choose the length in which the flasks hang by bending its shaft. The perfect little sparkle for any Christmas tree

bumblebbe_3@hotmail.com

Fashion Jewellery and Accessories

Prizes

First £500 Second £350 Third £150

Student Competition

In this popular category the judges are looking for fashion accessories which embrace the use of pewter. Students are asked to design a piece (or range) of jewellery, or a personal accessory which would appeal to young people to complement today's free-form fashion - which creates visual and tactile 'value' with pewter.



Crocheted Necklace

Lydia Feast

Birmingham City University

The initial inspiration for this necklace was derived from the roots of an aloe-vera plant. I have endeavoured to capture a delicate and intricate quality using pewter. The initial form was crocheted and then electroformed. It was then translated into metal before being cast in pewter.

la@hotmail.com



BLING – Kerz! Fashionable Spectacles

Beth Ashton Lewis

South Devon College

A range of spectacles with a difference 'BLING-Kerz' has been designed with a combination of traditional pewter with modern day acrylic to give a contemporary twist in order to target a market where spectacles are as much a fashion accessory as they are an aid to improve sight.

bethsworld@hotmail.com



Range of Pewter Decorated Scarves

Celina Jacques

Staffordshire University

A range of hand knitted woolen scarves with pewter decorations, inspired by flora and fauna. The cast flowers are stitched on to the scarves at one end to allow visibility in many different compositions. The flowers used are the sunflower, tulip, primrose and daisy.

js423099@student.staffs.ac.uk

Fashion



Decorative Pewter Belt

Caroline Linnecar

Staffordshire University

Working with simple castings I have developed a belt with a contemporary look. The style ties in with the current trends and captures the essence of both traditional and modern objects.

cazz_12@hotmail.com



Neckpiece

Emily Burnett

Hereford College of Art and Design

My work is inspired by patterns in tribal clothing and by using pewter I have created textured surfaces, reminiscent of cultural costumes. My fascination with tribes is shown through the red blood cell as a motif both in a singular form and as a cluster.

emburnett@hotmail.co.uk



'A Stitch in Time'

Claire Elizabeth Stanley

UCCA, Farnham

The discovery of old dressmaking patterns inspired the idea of stitching these pieces together. The rings and neckpiece contrast the dressmakers' pattern paper with the pewter. The forms are based on corsages and include stamped text from a textile glossary. Using the pewter like fabric, the dressmakers' patterns became a set of instructions for creating the jewellery.

ce_stanley@hotmail.co.uk

Fashion



Articulated Bracelet

Ema Fox

Truro College

The bracelet is made of identical, individual pieces joined with brightly coloured fishing wire, giving flexibility and a splash of colour. The exterior has been sand-blasted to leave a matt finish, the interior highly polished to give a reflective quality. When viewed from different angles this piece projects different shapes and forms.

excellentema@hotmail.co.uk



Funny Face Rings #5

Sarah John

South Devon College

The ring faces were cast from original heads made in clay. Pewter's ability to cast detail enables the pieces to show their expressive quality. The pewter adds character of its own and the faces become imbued with an ancient/gothic quality relating to the materials history.

noble.john@hotmail.co.uk



Keepsake Brooches.

Sophie Bradbury

Hastings College of Arts and Technology

Pewter, soft and malleable, picks up every nuance of texture from the letters I use for roll printing. The folds, fibres and, perhaps, the sentiment of the words are recorded here. The pewter forms the centre of a patinated copper brooch, inset for protection and held in place with silver wire.

sophiebradbury@btinternet.com



Leaf Collar Simple Necklace

Helen Lepper

Truro College

The leaf collar consists pressed pewter leaves hung on a silver cable and spaced with pink pearly crystal glass beads.

info@nanplough.co.uk

Fashion



Dimples

Rose Howes

South Devon College

This set was achieved by reticulating pewter and adding pewter wire to the surface to give another dimension. Then I polished different pieces to give another contrast. This set can be worn in a combination of ways, either as a set or by adding the bracelet to the neckpiece.

meganrose78@googlemail.com



Killer Heels

Margaret Barker

Truro College

Classic black high heeled shoes with a sharp and edgy trim. Discreet at close quarters, snappy as they walk away. Designed for the woman who knows her mind and gets her way! The matt surface was created by milling in tissue paper. The fluidity of finely milled pewter allowed the shape to mould to the shoes.

capitalinteriors@btinternet.com



Victory – Pewter Necklace

Margaret Barker

Truro College

This piece is inspired by the form of winners' laurel wreaths worn by early Greek Olympians in combination with modern medals. The necklace was created by texturing the pewter, press-forming the shape, then cutting using the RT Blanking Plate system and a jig punch. The piece was joined by hand. The back fastening and front ring are silver.

capitalinteriors@btinternet.com



Schmetterling

Rose Howes

South Devon College

This is a collection of rings that show both the delicate and strong side of the butterfly. The etching representing the delicate detail on the wings and the natural beauty of the insect in flight. The cut outs representing the stronger side and the strength in its flight.

meganrose78@googlemail.com

Fashion



Neckpiece

Fiona McAlear

Manchester Metropolitan University

Through the exploration of two part moulds I have cast a collection that echoes historical costume jewellery and reinvents it for a modern age. Existing earrings, rings and necklaces are pressed to form individual moulds and reveal a different design on either side. The piece is then polished and linked using ribbon.

Fionamclr@hotmail.com



Seed Pod Necklace

Rosalind Andain

Truro College

Inspired by the twisting shape of a seed pod, the curves of the petals and construction create its spiralled form. The design hides links and fastenings to keep the look organic.

rozandain@hotmail.com



Vintage Frame Necklace

Gracie Hiitt

Hereford College of Art and Design

Taking inspiration from line and shape in architecture and the surfaces of worn objects, my work focuses on elegant lines and repeated forms. Using aged and well loved pattern books and buttons set into resin, this has created a piece of jewellery with a vintage twist.

makeafreshstart@hotmail.com



Celtic Inspired Bangles

Debbi Silcock

Staffordshire University

These bangles are inspired by the 'ancients' and their use of symbolism in the way it transcends all ancient cultures and is based on the forces of nature. The spiral is indicative of rebirth and the cycle of life and the triple aspect is respected in many faiths.

mudgette@hotmail.co.uk

Fashion



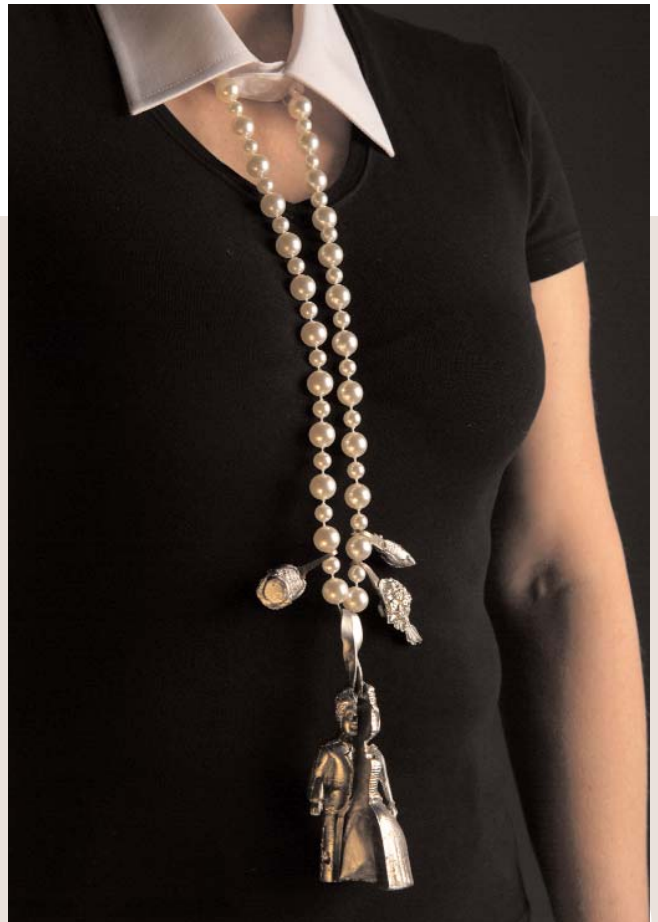
'A British Product Filling A Long-Felt Want'

Emily Hubbard

Hereford College of Art and Design

The aesthetics of mended, fixed, hand me down objects appeal to me and I feel a need to give them a home. My pieces incorporate remnants of the past and are reminiscent of childhood. The pewter directly contrasts the textured, worn surfaces.

Jemily2004@hotmail.com



'Now She Is Whole' Necklace with Charms

Katy Moloney

Staffordshire University

My piece was made as a look at how young girls are being socially conditioned into becoming the perfect housewife. The bride and groom charms are cast in plaster moulds then cut in half and the smaller charms sand cast. The pearls represent the female and the collar the male.

ms434721@student.staffs.ac.uk



Inside Out Pewter and Steel Bag

Sancha Demetriou

UCCA, Farnham

This exclusive evening bag draws inspiration from airport x-ray machines, the piece explores the idea of revealing on the outside of a bag what is normally kept hidden. The main external bag is made of pewter sheet, the handles are steel cable and plastic tube and the internal bag is made from steel mesh. All fixings are pewter.

sancha_demetriou@hotmail.com

Fashion



Suit Pocket Decoration

Kimberley May Piggott

UCCA, Farnham

This suit pocket decoration can be worn by both men and women. Inspired by London Fashion Weeks Autumn/Winter Armour trends, the piece combines the form of a folded handkerchief with the appearance of armour, drawing further inspiration for detail from old pewter touch mark plates. The detail was developed by using a specially created stamp tool.

kimberley-may-designs@live.com



Royal Blue Woven Tote Bag

Vikki Harris

UCCA, Farnham

This bag has been designed to demonstrate the flexible quality of pewter and its potential to be combined with fabrics to create a desirable fashion object I have used a traditional weaving technique to bring it up to date and show pewter's versatility.

harris.vikki@gmail.com



Histological Rings

Avril Stansfield

University College Falmouth

A collection of cast pewter rings in which pieces of cast coloured glass have been set. These rings are based on magnified images of human organs.

goodbean_123@hotmail.co.uk



Dot to Dot Bracelet

Christopher Thompson-Royd

London Metropolitan University

A cast piece the original form laser cut using CAD cam technology. The smooth ergonomic form of this bracelet make it very wearable, the ribbed bands gently running over the wrist.

cthompsonroyds@hotmail.com

Fashion

The Total Look

Prizes

First £500 Second £350 Third £150

Student Competition

The key elements of fashion design - material, colour, construction and shape - are what the judges are looking for. Pewter should be an integrated and essential part of the 'look'. The design is to have a strong fashionable image relating to current high street trends and students have been encouraged to create an entire outfit as if it were to be presented at a fashion show.



Theatre and Imagination

Anelia Kuprina

UCCA, Rochester

My ultimate catwalk outfit demonstrates pewter as an essential fashionable material combined in a harmonious manner to create a stunning design that is distinctive and attractive. The garment is sleek, sophisticated and will put you in the spotlight. The sensual satin of the dress, enticing lace and a dramatic pewter piece, creates a theatrical and fairytale effect.

anelykupra@rambler.ru



'You've Been Framed'

Owen Darryl Bather

UCCA, Rochester

This high fashion outfit juxtaposes the rustic feel of the traditional picture frame against the modern fashion of hoodies and jeans. This piece is designed to be noticed and is aimed at the younger generation who wish to make a dynamic statement in this fashion conscious world.

oddbod87@fsmail.net

Fashion



A Unisex Waisty
Jane Murtagh

UCCA, Rochester

A contemporary adaptation of the traditional waistcoat, in oriental silks and exaggerated neck fixings for visual appeal designed to be made in alternative fabrics such as pinstripe (tomorrow's fashion prediction), neoprene, denim or in combination. The design includes optional magnetic buttons and a neck-fixing in pewter which may be reduced in length for high street use.
thelodown@hotmail.com



Blue Satin Dress with Pewter Lace Detailing

Nadia Jessean Crystal

Birmingham City University

Blue satin dress with 'lace' pewter detailing to create a one-off dress with a unique look. The dress is designed to be worn on a special occasion, when you want to stand out from the crowd without making too much of a statement. A simple, yet classy, dress with lace patterned pewter embellishment.

naidacrystal@hotmail.com



'Embellish Me' – Embossed Pewter and Embroidered Smock Top.

Kirsty Alman

UCCA, Farnham

'Embellish Me' combines traditional lacework and pewter. Inspired by geometric patterns in lace, I pressed this fragile fabric into the pewter to create a delicate textured effect. Once cut up, the pewter loses this regimented pattern, and appears disorganised and random. The embroidery connects each disc and starts to bring structure back into the design.

kirstyalman@hotmail.co.uk

Fashion



Over-Underwear

Jayne Turnbull

London Metropolitan University

A signature piece for high street collection; Over-underwear. A sculptured bra, top stitched and embossed with lace in thin pewter, with transparent vacuum formed plastic cups, teamed with a wide suspender belt to sit on the hips. Worn over a frivolously frothy dress, stockings and ridiculously high heels.



Quilted Pewter Skirt

Laura Jackson

Birmingham City University

This unique design inspires elegance and beauty. It is a wearable one-off garment to be saved for special occasions to impress and create excitement at any event. With the use of raw silk and pewter it achieves a high quality and complements the shape of the design.

laurajackson15@hotmail.com

Association of British Pewter Craftsmen

The resurgence in trade can in the main be attributed to the formation in 1970 of the Association of British Pewter Craftsmen (ABPC).

The initiative was taken by a group of manufacturers, the metal suppliers and the Worshipful Company of Pewterers. By promoting high standards, raising awareness of pewter and encouraging innovation and excellence in manufacturing, the ABPC has achieved impressive results and together with the Pewterers' Company has helped to establish British pewter firmly in both domestic and international markets.

enquiries@abpcltd.co.uk

<http://www.britishpewter.com/>

MEMBERS

A. E. Williams Ltd
sales@pewtergiftware.com
www.pewtergiftware.com

A .R. Wentworth (Sheffield) Ltd
sales@wentworth-pewter.com
www.wentworth-pewter.com

Alchemy Carta Ltd.
info@alchemygroup.com
www.alchemygroup.com

Ancestors of Dover Ltd.
nick@ancestors.co.uk
www.ancestors.co.uk

Benchmark Woodworking Ltd
s.sutcliffe@benchmarkwoodworking.com
www.benchmarkwoodworking.com

Blyde Edwin & Co. Ltd.
pewter@edwinblyde.co.uk
www.edwinblyde.co.uk

Cool Blue Ltd
kyriacouli@aol.com

Chimo Fashionware
chimo@btclick.com
www.chimoholdings.co.uk

DJH Engineering Ltd
sales@djhpeawterworks.co.uk
www.djhengineering.co.uk

Gibson Pewter
gibsonpewter@aol.com

Glover & Smith
office@gloverandsmith.com
www.gloverandsmsith.com

Keith Tyssen Des RCA
keithtyssen@blueyonder.co.uk
www.keithtyssen.co.uk

Harkinson Jewellery Ltd
Doreen@pewtermill.fs.business.co

Lionheart Replicas
lionheartreplicas@tinyworld.co.uk
www.lionheartreplicas.co.uk

Park Metal Construction Ltd.
alan@parkmetals.fsnet.co.uk
www.parkmetals.fsnet.co.uk

Partners in Pewter
www.partnersinpewter.co.uk
Tel: 01628 485764

Peter Wheeler
peter@pwheeler.com

Pinder Brothers Ltd
dap@pinder.co.uk
www.pinder.co.uk

St Justin Cornwall Ltd
sales@stjustin.co.uk
www.stjustin.co.uk

Tom Neal Pewter
Tel: 01235 224 226

Welsh Pewter
gareth@peregrinepewter.co.uk
www.peregrinepewter.co.uk

Zinc Counters Ltd.
sales@zinccounters.co.uk
zinccounters.co.uk

ASSOCIATE MEMBERS

The Freeman College
Helen.kippax@fmc.rmet.org.uk
www.rmet.org.uk

Your Guide to British Pewter

What is Pewter?

Pewter is mainly Tin alloyed with other metals added to allow the material to be worked and formed. The Tin content will vary but is generally higher than 91.5%. Pewter was introduced to Britain by the Romans and has been used to produce objects both useful and desirable ever since. Today's British pewter industry is a dynamic and traditional one combining fine design and ancient skills to produce objects to be treasured and enjoyed.

How do I know its British Pewter

Only British pewter is allowed to carry the marks illustrated below, these are found stamped into each piece individually or as part of a collection of marks known as the "touchmark".

The symbols to look out for are:



The ABPC mark, which stands for the Association of British Pewter Craftsmen whose members, must make their objects to quality standards of craftsmanship and alloy composition.



The Seahorse mark is only allowed for use by ABPC members on their finest wares, the emblem comes from the coat of arms of the Worshipful Company of Pewterers in the City of London who have been permitted to police the industry since receiving a royal charter in 1474.



The EPU mark of the European Pewter Union, the composition of pewter conforms to BS EN611 parts 1 and 2 and the number in the centre is registered to a particular factory or firm, all UK numbers begin with a 3.

Association of British Pewter Craftsmen
Unit 10, 1st Floor, Edmund Road, Sheffield, S2 4ED.
Telephone: 0114 2527550

The Hall

The first Hall, completed in 1496, was destroyed in the Great Fire. The second Hall, on the same site in Lime Street, was demolished in 1932, although from the mid 19th century the premises were let to a firm of hatters. We do, however, still own the site. The present Hall was opened on a new site in 1961.

The Company is pleased to offer for hire parts of its imposing Hall in the City of London for special occasions. Few venues in the capital can rival a Livery Hall for prestige, splendour and an atmosphere of heritage. It is only a few minutes walk from three underground stations in the heart of the City.



MEETINGS, CONFERENCES AND PRESENTATIONS

Ideally situated in the heart of the City and with its flexible suite of air conditioned rooms, Pewterers' Hall is a wonderful backdrop for meetings, conferences and presentations. Audio Visual equipment can be arranged and our Beadle will be pleased to organise whatever support services you require to ensure your event runs smoothly.

THE COURT ROOM

The first floor Court Room, right, features panelling and chandeliers recovered from the previous Hall in Lime Street. It is a setting of elegance for special committee meetings, luncheons, presentations or receptions. The room is available for functions.

THE ANTEROOM

The Court Room is reached through the anteroom, left. If making a grand entrance is on the agenda, there can be few more natural settings.

THE LIVERY ROOM

The ground floor Livery Room, right, which lends itself to any occasion, is available for functions, including luncheons, presentations, receptions or dinners.

BOARDROOM STYLE MEETINGS

Court Room and Livery Room up to 70 Guests. Theatre style presentations up to 75 Guests.

RECEPTION AND STAND UP BUFFETS

Court Room up to 150 Guests, Livery Room up to 150 Guests, Ante Room up to 65 Guests.

SEATED MEALS

Court Room up to 90 Guests (long and round tables)

Livery Room up to 90 Guests (long and round tables)



Our Beadle will be delighted to discuss your specific event.

Email: beadle@pewterers.org.uk Tel: 020 7397 8192 Fax: 020 7600 3896

Statement of Design Rights

The works shown in the exhibition and in this catalogue are required by the Worshipful Company of Pewterers to be original works, but the Company does not make any warrantee in this regard.

Unregistered Rights. All the works shown in this catalogue and exhibited at Pewter Live 2008 at Pewterers Hall, London EC2V 7DE on 10th June 2008 may be protected automatically by Unregistered Design Right for 10 years in the UK as provided by the Copyright, Designs and Patents Act 1988 and for 3 years in Europe as provided by EC Council Regulation No. 6/2002 on Community Designs, subject to fulfilment of the requirements for qualification for UK Design Right protection and/or EU Unregistered Design protection. Unregistered Design rights protect only against copying by a third party.

Registered Rights. EC Council Regulation No. 6/2002 also provides that an application for EU Registered Design may be submitted for any of these designs so exhibited that fulfil the requirements for EU Registered Design protection within 12 months of the date of first exhibition of the design, as long as the exhibition was the first disclosure of the design otherwise than in confidence. The application would receive the filing date of the actual date of submission of the application but the exhibition disclosure will not be taken into account for the purpose of assessing qualification for Registered Design protection. Registered Design protection is also available in the UK only.

Further Details. Advice regarding asserting Unregistered Design Rights and the procedure involved in applying for the Registered Design Rights can be obtained at no charge by the authors of the designs (or with their written permission) by application to The Clerk, The Worshipful Company of Pewterers, Pewterers Hall, Oat Lane, London EC2V 7DE by post or email to clerk@pewterers.org.uk .

These details are kindly provided by Kilburn & Strode, 20 Red Lion Street, London WC1R 4PJ.

Copyright A Rurhmann 2008